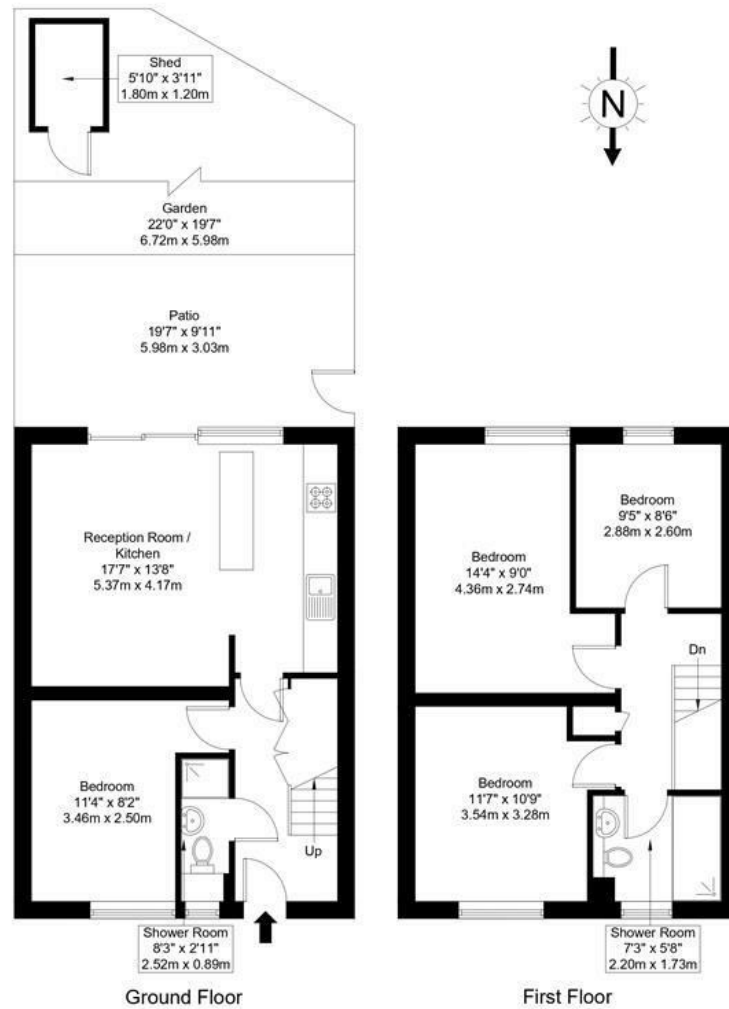


## Upper Richmond Road, SW15 5RA

Approx Gross Internal Area = 86.37 sq m / 930 sq ft  
 Shed = 2.16 sq m / 23 sq ft  
 Total = 88.53 sq m / 953 sq ft



Ref :

Copyright **BLEU PLAN**

The Floor plan is not to scale and measurements and areas shown are approximate and therefore should be used for illustrative purposes only. The plan has been prepared in accordance with the RICS code of Measuring Practice and whilst we have confidence in the information produced it must not be relied on. Maximum lengths and widths are represented on the floor plan. If there is any aspect of particular importance, you should carry out or commission your own inspection of the property.  
 Copyright © BleuPlan

**DISCLAIMER**•These particulars are intended to give a fair and substantially correct overall description for the guidance of intending purchasers and do not constitute an offer or part of a contract. Prospective purchasers and/or lessees ought to seek their own professional advice.  
 •All descriptions, dimensions, areas, references to condition and necessary permissions for use and occupation and other details are given in good faith and are believed to be correct, but any intending purchasers should not rely on them as statements or representations of fact, but must satisfy themselves by inspection or otherwise as to the correctness of each of them.  
 •All measurements are approximate.



## Upper Richmond Road, London, SW15

A four bedroom end of terrace house with a 41ft south facing garden and off street parking. This property is situated in a quiet private road off the Upper Richmond Road. Marrick Close is within walking distance to Barnes railway station and conveniently close to the friendly Dover House Conservation parade of shops and restaurants. Comprising, four bedrooms, open plan kitchen/ reception room with doors leading out to the garden and two bathrooms. This property is offered with no onward chain.



- FOUR BEDROOMS
- KITCHEN/RECEPTION ROOM
- CLOSE TO LOCAL AMENITIES
- TWO BATHROOMS
- PRIVATE SOUTH FACING GARDEN
- WALKING DISTANCE TO BARNES STATION

Guide Price  
**£775,000**  
 Under Offer (SSTC)

